

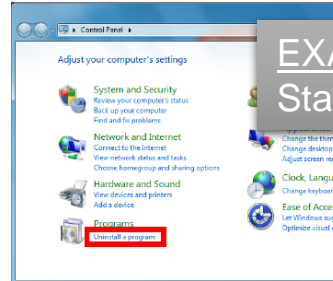
YAMAHA e-Bike Diagnostic software



**YAMAHA MOTOR CO.,
LTD.
SPV QA/Service**

■ Installation

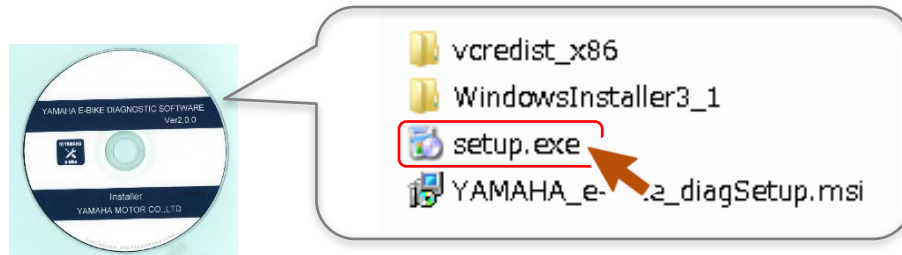
* If the PC has already installed Ver.1, please uninstall Ver.1 before installing Ver.2



EXAMPLE

Start > Control Panel > Programs > Programs and Features

1. Software installation



Select an execute file "setup.exe"

1. Device driver installation

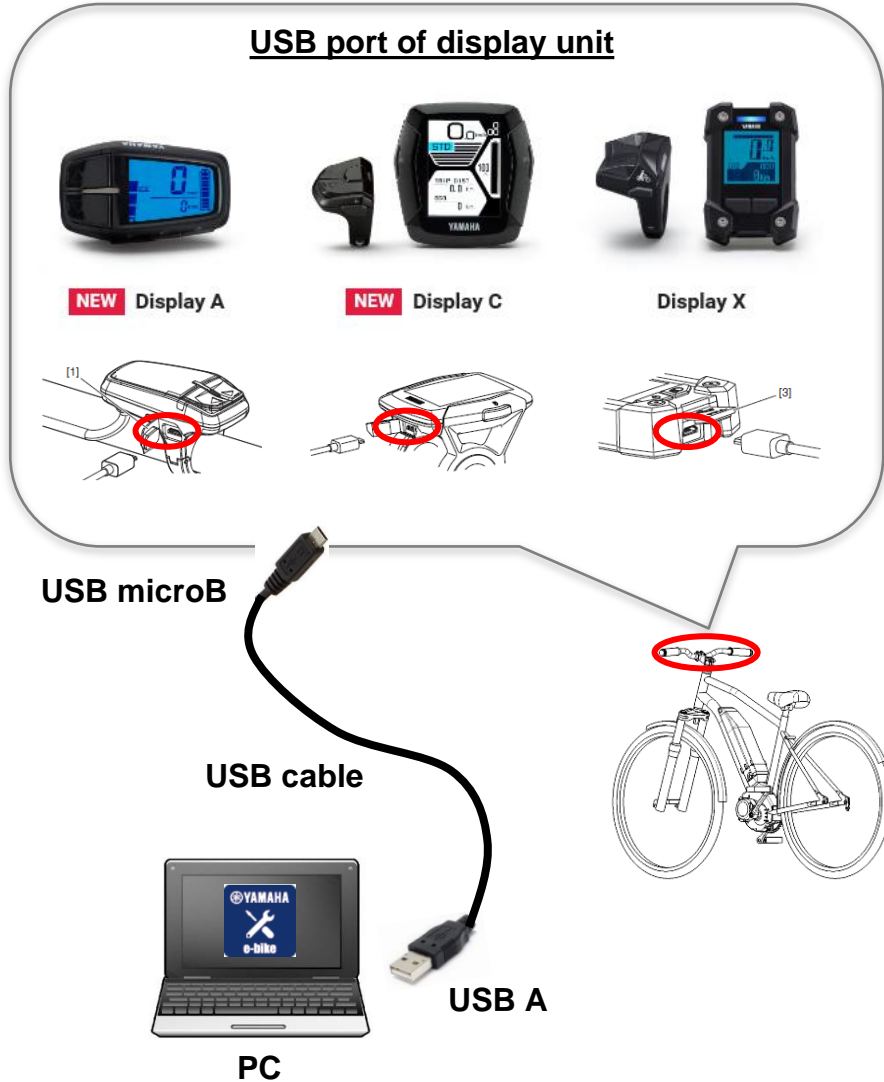
Operating system	Installer
Windows 7 32bit And previous	"C:\Program Files\STMicroelectronics\Software\Virtual comport driver\Win7\dpinst_x86.exe"
Windows 7 64 bit	"C:\Program Files (x86)\STMicroelectronics\Software\Virtual comport driver\Win7\dpinst_amd64.exe"
Windows 8 32bit [1]	"C:\Program Files\STMicroelectronics\Software\Virtual comport driver\Win8\dpinst_x86.exe"
Windows 8 64bit [1]	"C:\Program Files (x86)\STMicroelectronics\Software\Virtual comport driver\Win8\dpinst_amd64.exe"

Select an execute files that matches your PC system.

* For other Windows versions, please download the driver by yourself.

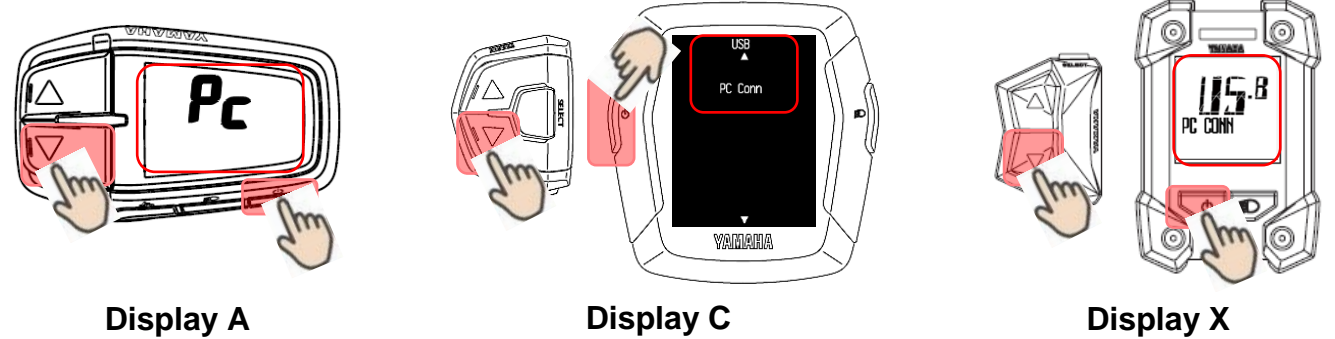
■ Hardware setup

Connection

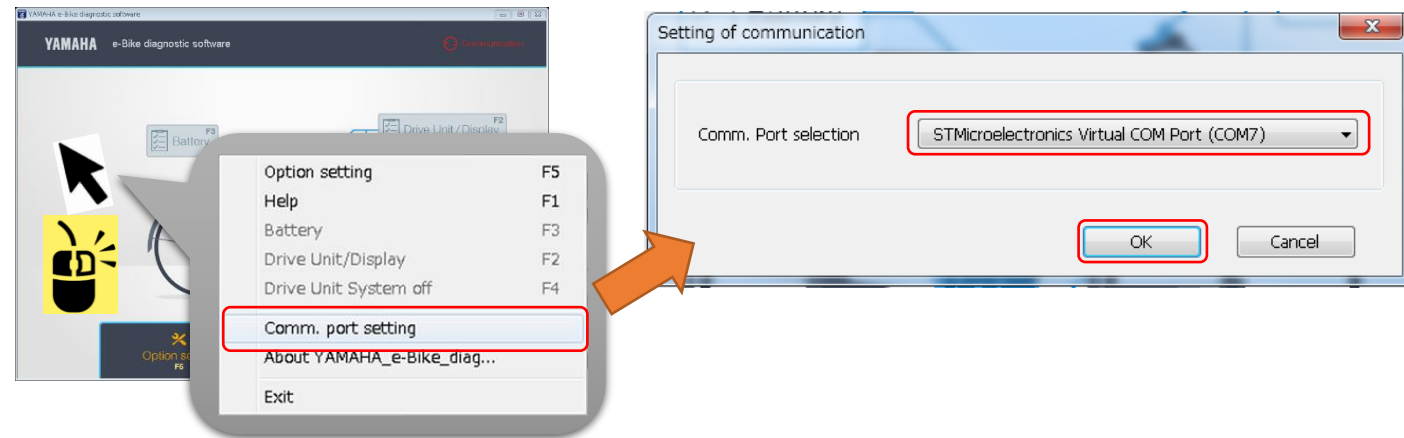


Startup

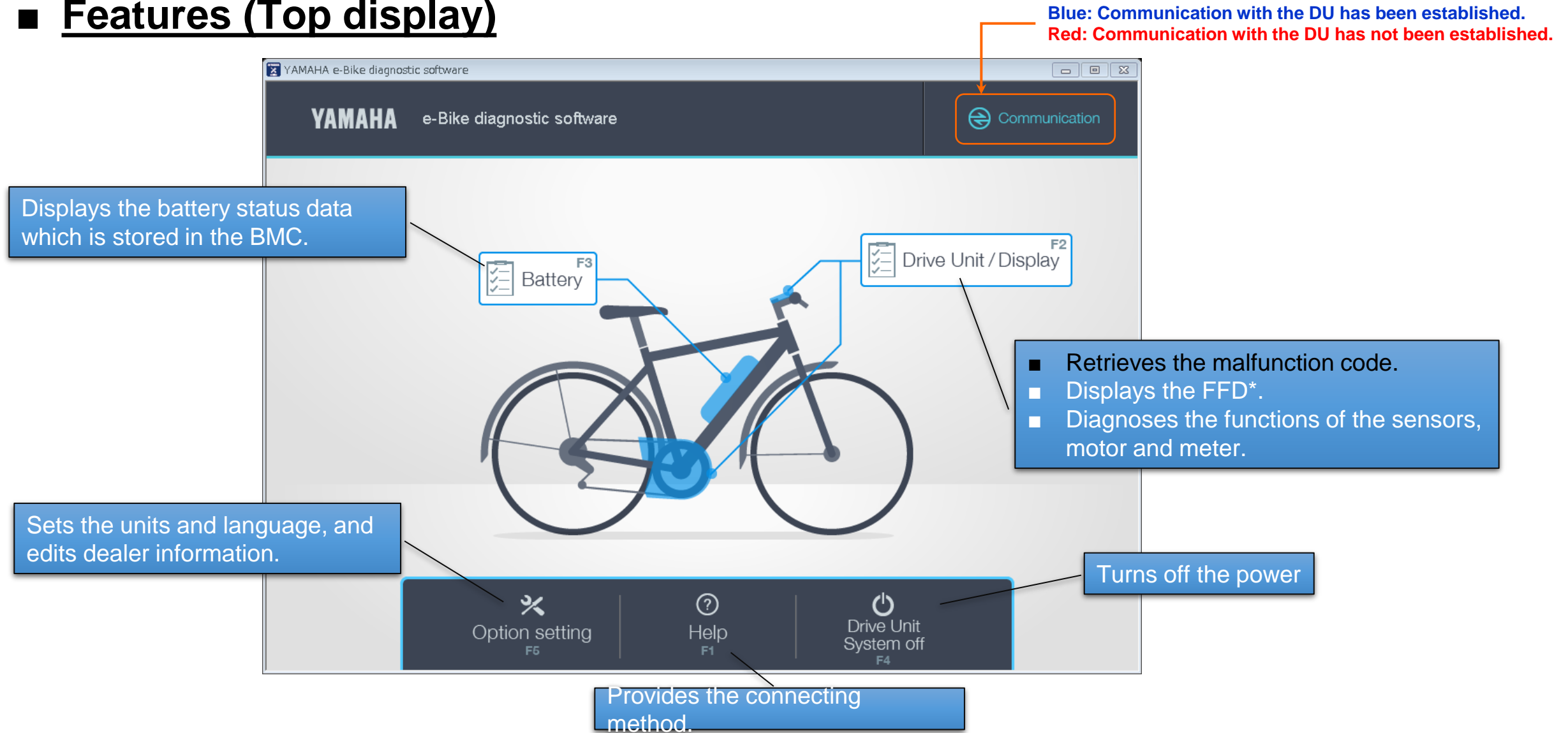
1. Connect the USB cable.
2. Continue to push “assist mode switch (Down)” and “Power switch” over 2 sec. After 2 sec., “Pc” (for display A), “USB PC CONN” (for display C&X) will display on the meter



1. Launching the software
2. Right-click on the display, and select the comm. Port selection.



■ Features (Top display)



FFD*

The freeze frame data (FFD) is the operation data when a malfunction was detected.

This data can be used to identify when the malfunction occurred and check the Drive Unit conditions when it occurred.

■ Features (Drive Unit / Display) 1/2

- Retrieves the malfunction code.
- Displays the FFD* when you click each malfunction codes.

Code 31
Disconnected

Code 31
No communication signals

Code 31
Wiring failure between the torque sensor and the controller

Code 31 : No communication signals

Mileage: 0 hour

Occurrence time from system ON: 0 hour 00 min

Speed: 0 km/h (0 mph)

Cadence: 0 rpm

Battery voltage: 40 V

Drive Unit inside temperature: 24 °C

Torque sensor reference voltage: 0.5 V

(Refer to next slide)

YAMAHA

Inspection results

Date: 05.7.2018
Customer: Yamaha Rider
Frame serial No.: xxxxx-0000000
DU serial No.: xxxxx-0000000
Mileage: 0 km

Malfunction

Code 31
Disconnected

Mileage: 0 hour
Occurrence time from system ON: 0 hour 00 min
Speed: 0 km/h (0 mph)

Cadence: 0 rpm
Battery voltage: 40 V
Drive Unit inside temp.: 24 °C
Torque sensor reference voltage: 0.5 V

Code 31
No communication signals

Mileage: 0 hour
Occurrence time from system ON: 0 hour 00 min
Speed: 0 km/h (0 mph)

Cadence: 0 rpm
Battery voltage: 40 V
Drive Unit inside temp.: 24 °C
Torque sensor reference voltage: 0.5 V

Code 31
Wiring failure between the torque sensor and the controller

Mileage: 0 hour
Occurrence time from system ON: 0 hour 00 min
Speed: 0 km/h (0 mph)

Cadence: 0 rpm
Battery voltage: 40 V
Drive Unit inside temp.: 24 °C
Torque sensor reference voltage: 0.5 V

System function test

Speed sensor

OK

Motor output current

OK

Torque sensor reference voltage

0.5 V

Need adjust

Display unit function check

OK

Motor rotation check

OK

YAMAHA MOTOR

Address: *****

Contact: *****

E-mail: *****

URL: http://www.yamaha.com

SAMPLE

YAMAHA e-Bike diagnostic software

Drive Unit / Display Malfunction

YAMAHA e-Bike diagnostic software

Communication

Code 31
Disconnected

Code 31
No communication signals

Code 31
Wiring failure between the torque sensor and the controller

System function test

Speed sensor 0 times ☐ OK ☐ Failed

Motor output current 0 % ☐ OK ☐ Failed

Torque sensor reference voltage 0.5 V ☐ OK ☐ Failed

Display unit function check ☐ OK ☐ Failed

Motor rotation check ☐ OK ☐ Failed

Note

Option

Prints the inspection results

Save the parameter files (*.bin)

Erase malfunction history
(All malfunction history will be deleted)

■ Features (Drive Unit / Display) 2/2

Checks the functionality of the speed sensor operation.
(Number will increase when rotate the wheel with sensor.)

Checks the functionality of the motor current.
(Number will increase when applying the rear brake and strongly pressing on the pedals.)

Displays the condition of the torque sensor reference voltage.

Checks the functionality of the display unit operation.
(All segments will illuminate when you click the button)

Checks the functionality of the motor operation.
(The motor will rotate when you click the button)

YAMAHA e-Bike diagnostic software

Drive Unit / Display Malfunction

YAMAHA e-Bike diagnostic software

Communication

Code 31
Disconnected

Code 31
No communication signals

Code 31
Wiring failure between the torque sensor and the controller

System function test

			OK	Failed	Note
Speed sensor	0	times	<input type="checkbox"/>	<input type="checkbox"/>	
Motor output current	0	%	<input type="checkbox"/>	<input type="checkbox"/>	
Torque sensor reference voltage	0.5	V	<input type="checkbox"/>	<input type="checkbox"/>	
Display unit function check	Check		<input type="checkbox"/>	<input type="checkbox"/>	
Motor rotation check	Check		<input type="checkbox"/>	<input type="checkbox"/>	

Option

< Back
Esc

✕ Erase malfunction history
F6

Print
F7

Save
F12

You can select the inspection result and fill in the memo.

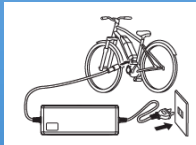
■ Features (Battery)

Displays the battery status data which is stored in the BMC.

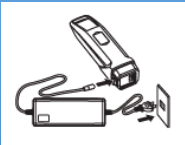
“Residual battery capacity”
Displays the charging capacity.
(Battery deterioration capacity is not displayed in this software)

“Total number of battery charging cycles”

Definition of “1 cycle”



Charge
(Connect the battery pack to charger)



Discharge
(Assist running)

YAMAHA e-Bike diagnostic software

Battery

YAMAHA e-Bike diagnostic software

Communication

Battery information

Battery voltage: 40.9 V

Inside temperature: 26.1 °C

Residual battery capacity: 92 %

Total time since first charge: 166 day

Total number of battery charging cycles: 1 times

Charge start from...

0-24%: 1 times

25-49%: 0 times

50-74%: 0 times

75-100%: 0 times

Option

Print F7

Save F12

Back Esc

Save the parameter files (*.bin)

Prints the inspection results

SAMPLE

YAMAHA

Inspection results

Date: 03/12/2019

Customer: Yamaha Rider

Vehicle model No.: xxxxx-0000000

Battery model No.: xxxxx-0000000

Mileage: 120 km

Battery information

Battery voltage: 40.9 V

Inside temperature: 26.1 °C

Residual battery capacity: 92 %

Total time since first charge: 166 day

Total number of battery charging cycles: 1 times

Charge start from...

0-24%: 1 times

25-49%: 0 times

50-74%: 0 times

75-100%: 0 times

YAMAHA MOTOR

Address: xxxxx-xxxx-xxxx

Contact: xxxxx-xxxx-xxxx

E-mail: xxxxx-xxxx-xxxx

URL: xxxxx-xxxx-xxxx