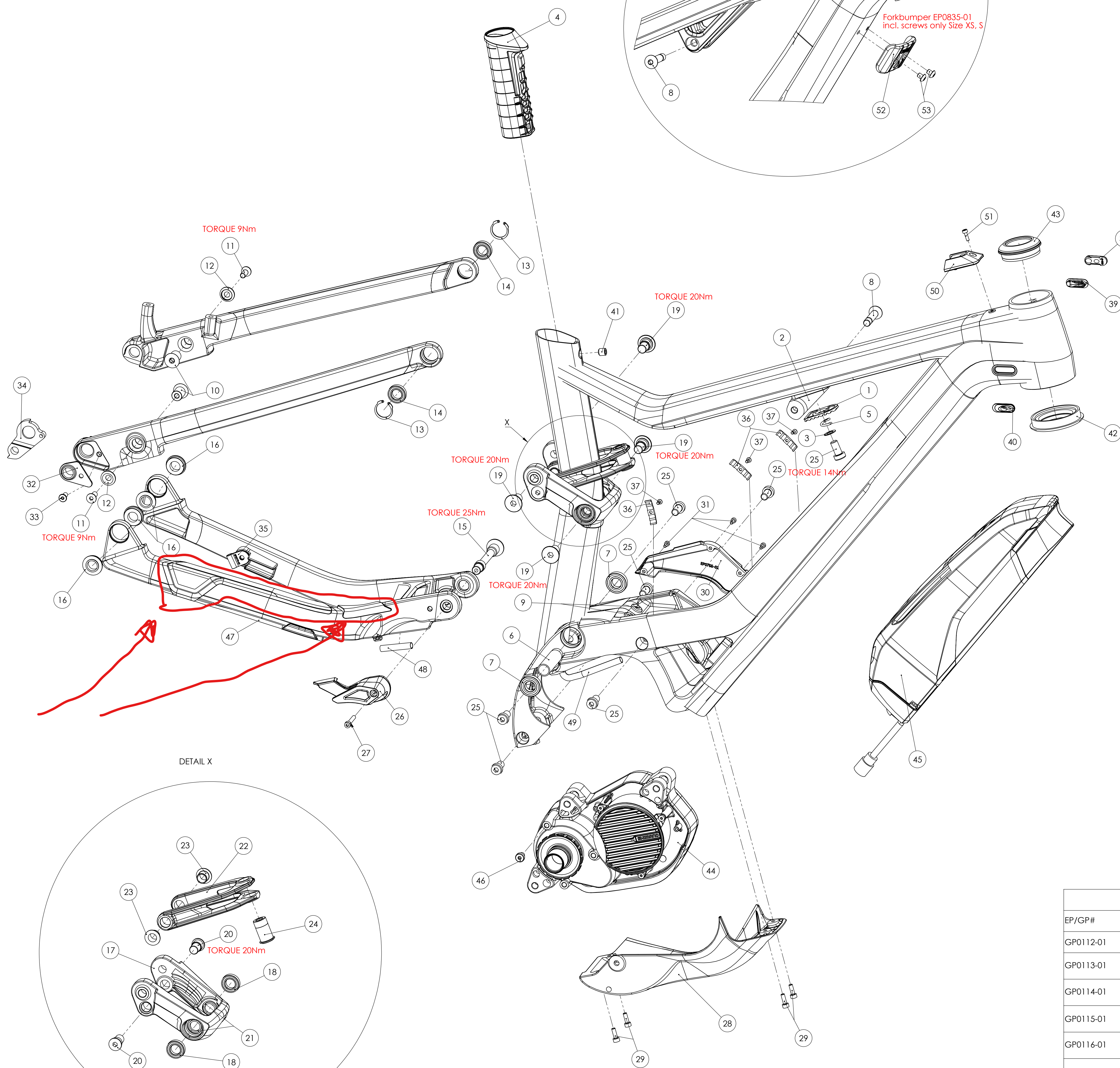


Schutzmerk nach DIN 34 beachten!



After market products			
EP/GP#	Pos.Nr.	Description	Canyon#
GP0112-01	26 (1x), 27 (1x)	CNGU Kit PC	170917
GP0113-01	2 (1x), 3 (1x), 5 (1x)	Spare Part Kit Clevis	170918
GP0114-01	19 (4x), 20 (2x), 21 (2x)	Mounting Kit RC_SE_MF	170919
GP0115-01	50 (1x), 51 (1x)	USB Powersocket Kit	10002759
GP0116-01	10 (2x), 11 (2x), 12 (2x)	Mounting Kit HL	170920
GP0117-01	13 (2x), 14 (2x), 18 (2x)	Bear Kit RC	170921
GP0118-01	7 (2x)	Bear Kit MP	170922
GP0119-01	16 (4x)	Bear Kit HL	170923
GP0155-01	33 (1x), 34 (1x)	RD-Hanger Kit Sram	10001125
GP0156-01	33 (1x), 34 (1x)	RD-Hanger Kit Shimano	10001126
	23 (2x)	IGUS Bushing ZFM-1012-10	10000068

POS-NR.	NAME	DESCRIPTION	ITEM#	FILE NAME	MATERIAL	QTY.	CANYON#
1	Shockmount tooth plate		EP0740-01	EP0740-01_M064-01_shockmount-tooth-plate_A_001	SUS303/SUS304	1	20002198
2	Clevis for shockmount		EP0743-01	EP0743-01_M064-01_shockmount-clevis_A_002	AL7075 T6	1	
3	Washer			STD_washer_steel		1	
4	Seat clamp		GP0040-01	EP0620-01_CLMP (integrated seatclamp, data from Edison_confirmed)_C_001	plastic	1	170838
5	Spring			STD_spring-to_be_defined		1	
6	Spacer		EP0741-01	EP0741-01_M064-01_spacer_Mainpivot-bearings	AL6061	1	20002199
7	Bearing	24x12x6	6901V	STD_BEAR_6901V_24x12x6-V-type		2	
8	Screw upper shockmount		EP0742-01	EP0742-01_SCRW_M8_M064-01_Upper-Shockmount		1	20002200
9	Blind plug		E40-10	Sicherung (I) von E40-10 rubber_plug_for_M5	rubber	2	100057
10	Horstlink bolt	M6	EP0748-01	EP0748-01_Bolt_M6-M064-01_Horstlink-inner_A_003	AL6061	2	
11	Horstlink screw	M6x16	ISO 10642	ISO 10642 - M6 x 16 --- 16N		2	
12	Washer		EP0749-01	EP0749-01_shim_countersunk_M064-01_horstlink_A_002	AL6061	2	
13	Clipring	JV21		STD_CLIP_Seeger_JV21_21mm-bore-clipring		2	
14	Bearing	21x12x5	6801V	STD_BEAR_6801V_21x12x5-V-Type-cageless		2	
15	Mainpivot axle	M12	EP0750-01	EP0750-01_SCRW_M12_Mainpivot-axle	AL7075 T6	1	20002201
16	Bearing	21x12x5	6801-2RD	STD_BEAR_F6801_2RD_21x12x5_flange-on-outer-ring-extended innering		4	
17	Rockerarm		EP0753-01	EP0753-01_ROAR_M064-01_Rocker_A_003	AL6066	1	see SAP
18	Bearing	21x12x5	6801V	STD_BEAR_6801V_21x12x5-V-Type-cageless_exp		2	
19	Screw	M10	EP0747-01	EP0747-01_SCRW_M10_M064-01_Rocker_A_001	AL7075 T6	4	
20	Screw Rocker/Shockextension	M12	EP0756-01	EP0756-01_SCRW_M12_Rocker-shockextension	SCM440	2	
21	Spacer	12x15x3	EP0757-01	EP0757-01_Spacer_12x15x3_Rocker-Mainframe	AL6061	2	
22	Shock Extension		EP0754-01	EP0754-01_ROAR_M064-01_Shockextension_A_005	AL7075 T6	1	20002202
23	Bearing IGUS			STD_BEAR_IGUS-ZFM-1012-10		2	10000068
24	Screw Shockextension		EP0758-01	EP0758-01_SCRW_shock-shockextension_A_002	SUS303	1	20002203
25	Screw for Motor assembly	M8x16	ISO4762	socket head thin cap screw_din		7	166194
26	Chainguide		EP0752-01	EP0752_PROT_M064-01_Chainguide_C_002	plastic	1	
27	Screw for Chainguide	M4x25	ISO4762	socket head cap screw_iso	stainless	1	
28	Skidplate		EP0745-01	EP0745-01_PROT_M064-01_Skidplate_A_005		1	166198
29	Screw for Skidplate	M4x12	ISO4762	socket head cap screw_iso		4	166199
30	Motor cover		EP0755-01	EP0755-01_M064-01_motor-cover_A_002		1	166200
31	Screw for Motor cover	M3x8	ISO4762	socket head cap screw_iso		3	164393
32	DO chip	M12x1	EP0615-01	EP0615-01_NUT_M12x1_IDO-Chip_B_004_DH		1	160468
33	Screw for DO chip	M5x12		Screw_M5x12_flat-head_hex2.5_for-E170-14_005		1	160469
34	RD Hanger		EP0786-01	RD-Hanger_No.26_SRAM-standard_007		1	164150
			EP0787-01	RD-Hanger_No.27_SHIMANO		1	164149
35	Brake cable guide		EP0779-01	EP0779-01_brake-cable-guide		1	166202
36	Cable clip		EP0744-01	EP0744-01_cableclip_M064-01	AL6061	3	166203
37	Screw for cableclip	M3x8	ISO10642	ISO 10642 - M3 x 8 --- 8N		3	166204
38	Plug for BR/RD	E515-16		E515-16_Plug_for_BR_and_RD	rubber	1	140304
39	Reverb grommet	E494-16		E494-16_Reverb Grommet_V4	rubber	1	148016
40	Di2 hydro grommet		EP0683-01	EP0683-01_di2-hydro-grommet_B_001	rubber	1	154653
41	Screw	M8x8	ISO4026	STD_SCRW_ISO4026_hex-socket-set-screw_M8x8_s4_stainless_brownd	stainless	1	116743
42	Headset Bottom			ZS56-40_Bottom		1	166514
43	Headset top			ZS44-28_6_Top		1	166513
44	Motor			DU_E8000_rev_1		1	165932
45	Accu			BT_E8010_BM_E8010_rev_3.skidasm-Part-5-1		1	165908
46	Screw	M6	EP0802-01	EP0802-01_SCRW_M6_M064-01-cableguide-motorinterface_A_002	AL6061	1	166206
47	Hose Cableguide RD			STD_Liner_OD7-ID6	PA12	1	166492
48	Hose Cableguide RB			STD_Liner_OD7-ID6_rear brake	PA12	1	166493
49	Hose Cableguide DP			STD_Liner_OD7-ID6_dropper post	PA12	1	166491
50	USB Powersocket		EP0773-01	EP0773-01_USB-Powersocket_A_001		1	
51	Screw	M3x10	ISO 4762	socket head cap screw_iso		1	
52	Forkbumper D/T		EP0835-01		TPR+Stainless steel	1	20003887
53	Screw	M5x12		Flat Head Hex 2.5		2	160469

CANYON		Item#	Surface	Scale: 1:2	Format: A0
		Material		Weight: hg	
		Create: 07.11.2018	Name: A.T.	Description: M064-01/M093-01_BOM Spectral-ON/Neuron-ON	
		Drawn:		Drawing Nr: FRM064-01_XK_00M_Hybrid	
		Partage: 1-0.2	1-0.2	Sheet 1 of 1	
		Filename: FRM064-01_XK_00M_Hybrid			