

# G-System Service Kit

Version 1.0 - March 2023

## This Kit Services the following models:

### G-System Range

Year	Model
20-23	AMITI E+ 4
18-19	Amiti-E+ 2
17-18	Dirt E+ (ALL)
19-21	Embolden E+ (ALL)
17-20	Explore E+ 1/2/3
17-23	Explore E+ 4
20	Fastroad E+ (ALL)
19-21	Fathom E+ (ALL)
17-18	Full E+ (ALL)
19-20	Intrigue E+ Pro (ALL)
19-22	Lafree E+ (ALL)
17-19	Quick E+
20	Reign E+ (ALL)
17-19	Road E+
20	Road E+ 1 Pro
21-22	Roam E+
21-22	Rove E+
20	Stance E+ Pro (ALL)
19-21	Stance E+ 1
19-22	Stance E+ 2 (500wh Battery)
21	Talon E+ (ALL)
21	Tempt E+ (ALL)
20	Thrive E+ (ALL)
18-19	Toughroad E+
19-20	Trance E+ (ALL)
20-22	Transend E+
18-20	Vall-E+
20-22	Vida E+



**Page 2:** G-System Kit Contents

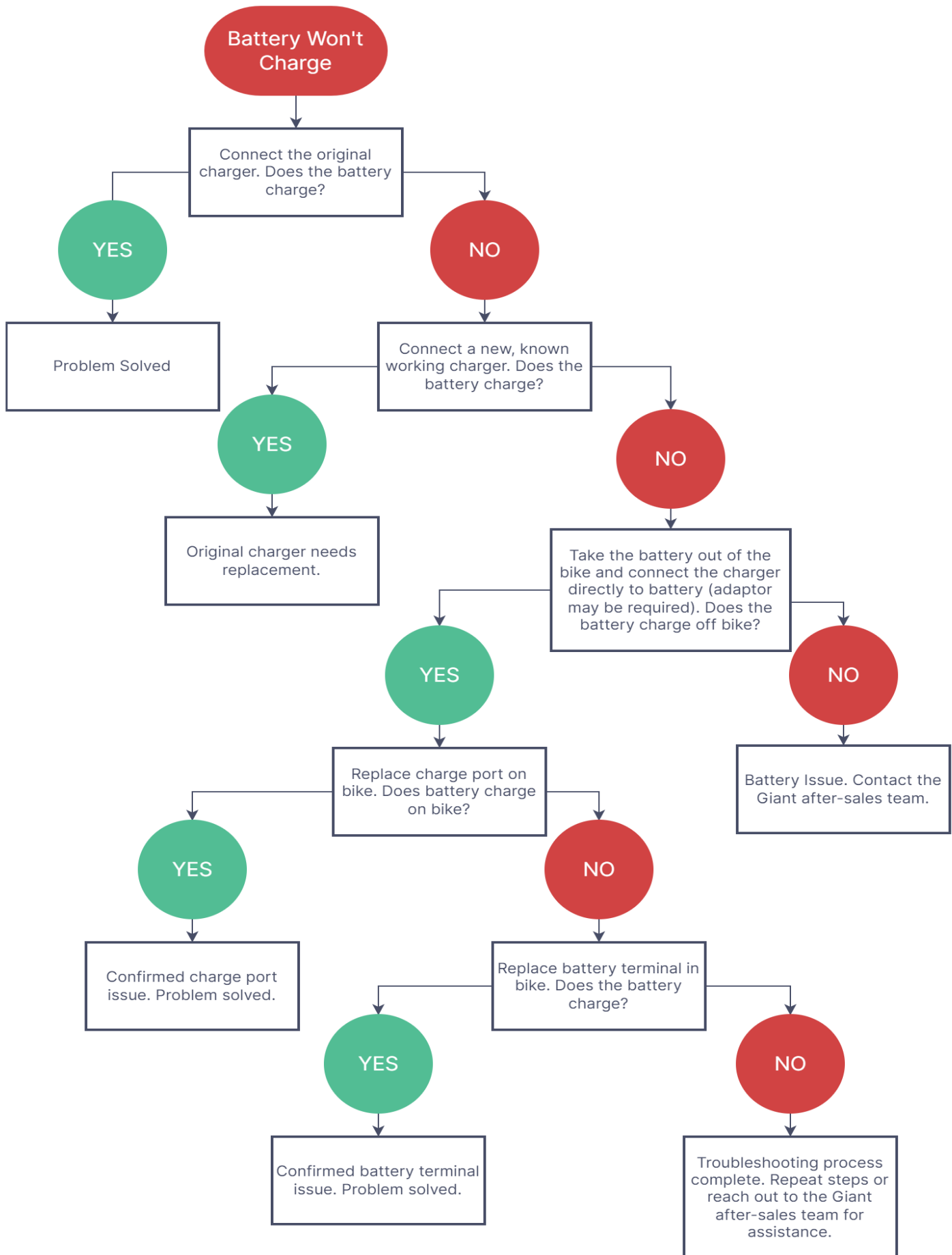
**Page 3-5:** Troubleshooting Flowcharts

**Page 6-15:** Kit Parts Overview

## G-System Kit Contents

	Part Description	Part Sku	Part Photo
<b>A</b>	RideControl Button Pad & Bluetooth Unit	245-FLED28-15	
<b>B</b>	RideControl Display Remote	2417MFBTNXX-01	
<b>C</b>	RideControl Display <i>**Two interchangeable skus, only one display included in kit**</i>	245MFLCD28-59 245MFLCD28-60V	
<b>D</b>	Downtube Cable Type 1 – 3 pin connector	147L-HDPOBX-02	
<b>E</b>	Downtube Cable Type 2 – 4 pin connector	147L-HDPOB0-15	
<b>F</b>	Wheel Speed Sensor Type 1–Dropout Mount	4430-FSJISS-01	
<b>G</b>	Wheel Speed Sensor Type 2–Stay Mount	245MYAMH-02V	
<b>H</b>	Battery Terminal Shim & Screws (Set of 3)	2120MWASHER-520V	
<b>I</b>	SyncDrive Motor Spider Tool – 36mm Socket	2520-36NUT-02V	
<b>J</b>	T25 Security Torx Wrench	2520-T25-01V	

## Battery Charge Issues:

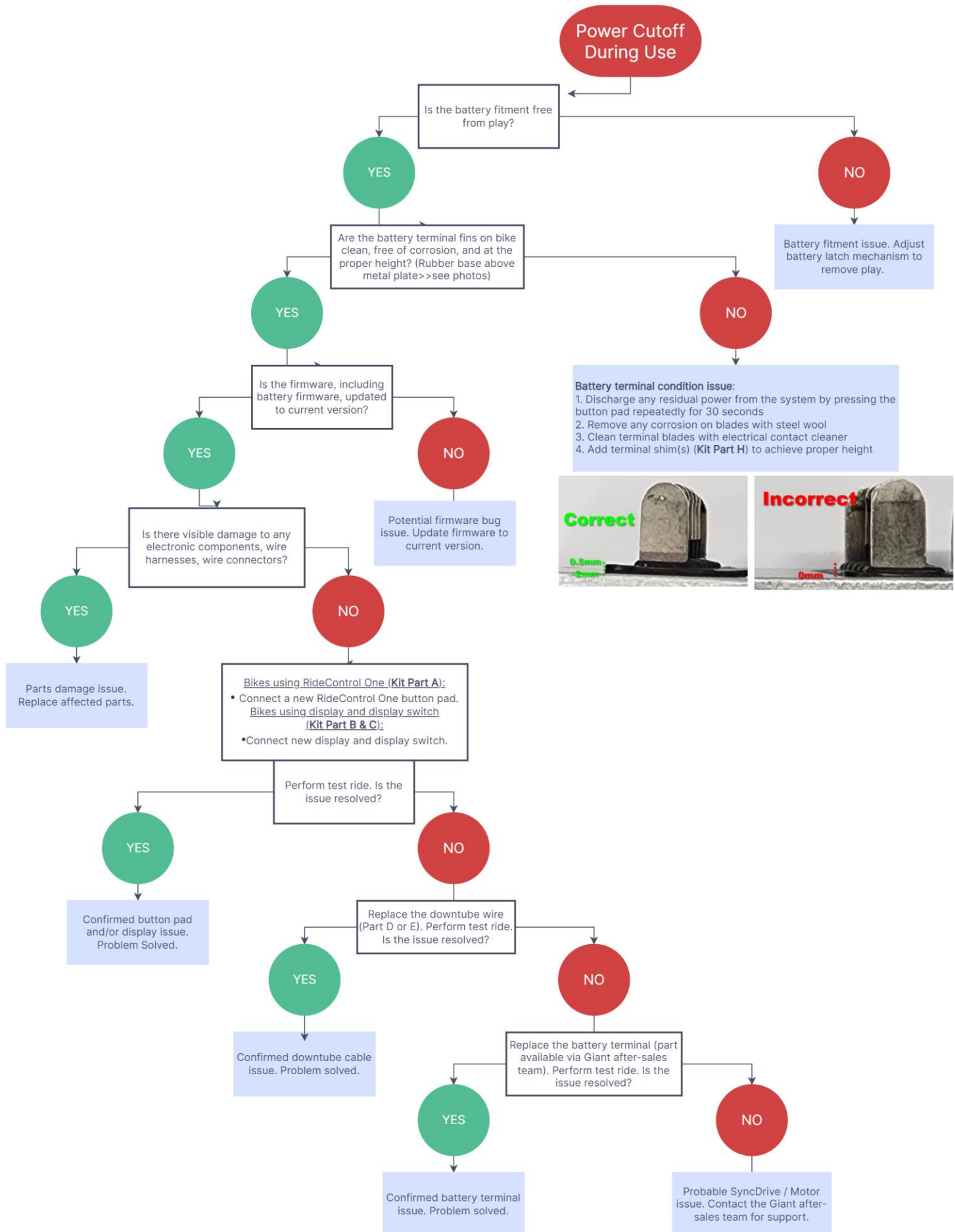


## Bike Cannot Power On:





## Power Cutoff During Use:



## 245-FLED28-15

19-21 RideControl One, G-System, ANT+



### Functions

- Holds bike's operating system programming and Bluetooth/ANT+ Radio
- Reads Button Functions to communicate with motor
- Sends Speed to Phone App
- Sends Battery info to Phone App
- Turns bike on and off
- Shows Charge Status
- Selects assist modes
- Activates Walk Assist
- Turns lights on and off

### Diagnostics

- on/off power issues
- lighting issues
- Assis mode issues

## 2417MFBTNXX-01

17-20 RideControl Evo/Charge Remote



### Functions

- Turns bike on and off
- Selects assist modes
- Activates Walk Assist
- Turns lights on and off
- Changes Display Screens
- Changes Display Brightness

### Diagnostics

- on/off power issues
- lighting issues
- Assis mode issues
- Walk Assist issues

## 245MFLCD28-59

18-20 RideControl EVO Display 3 mode AND 5 mode w/Auto



### Functions

- Communicates with USB Service Tool (600000066)
- Holds bike's operating system programming and Bluetooth/ANT+ Radio
- Reads Button Functions to communicate with motor
  - Responds to button pad
  - Displays:
    - Current speed
    - Odometer
    - Battery Charge Percentage
    - Assist mode
    - Shows if lights are on and off
    - Trip info:
      - Max Speed
      - Trip Distance

### Diagnostics

- Use with Remote (2417MFBTNXX-01)
- Exchange with RideControl One (245-FLED28-15)

### As an add-on accessory

- Requires Remote (2417MFBTNXX-01)



## 147L-HDPOBX-02

17-22 Main Display Cable G-System 3pin 830mm Rigid + FS



### Functions

- Connects Display System to Motor and Battery
- Connects to lights

### Diagnostics

- Power issues
- Assist issues
- Lighting issues

## 147L-HDPOB0-15

20-21 Main Display Cable G-System 4pin 730mm



### Functions

- Connects Display System to Motor and Battery
- Connects to lights

### Diagnostics

- Power issues
- Assist issues
- Lighting issues

## 4430-FSJSS-01

20+ Wheel Speed Sensor Integrated 600mm



### Functions

- Speed info to motor

### Diagnostics

- Speed issues

## 245MYAMH-02V

17-21 Speed Sensor Chain Stay Mounted 700mm



### Functions

- Speed info to motor

### Diagnostics

- Speed issues

## 2120MWASHER-520V

19+ Integrated Battery Terminal SHIM (3 w/screws)



### Functions

- Alters height of terminal blades.

### Diagnostics

- Power issues
- Charging issues



## 2520-36NUT-02V

17+ Sport Life Motor 36mm Spider Lock Ring Tool 3/8 Socket



### Functions

- Chainring Sider Removal for Core, Life, Sport Motors

## 2520-T25-01V

17-22 E-Bike Security Pin-Hole Torx Wrench T25



### Functions

- Remove chainstay mounted speed sensors
- Remove and Adjust EMTB Battery Locks