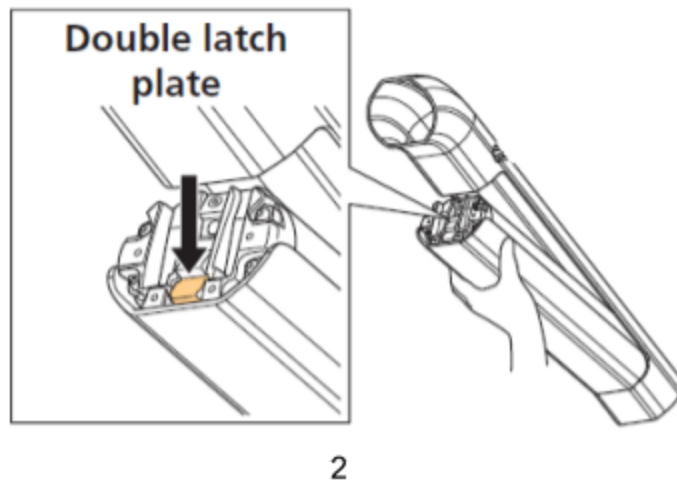


Scope

Battery mount spacing of Heckler 8 and Bullit 3. The following details how to verify correct mount spacing and adjust if needed.

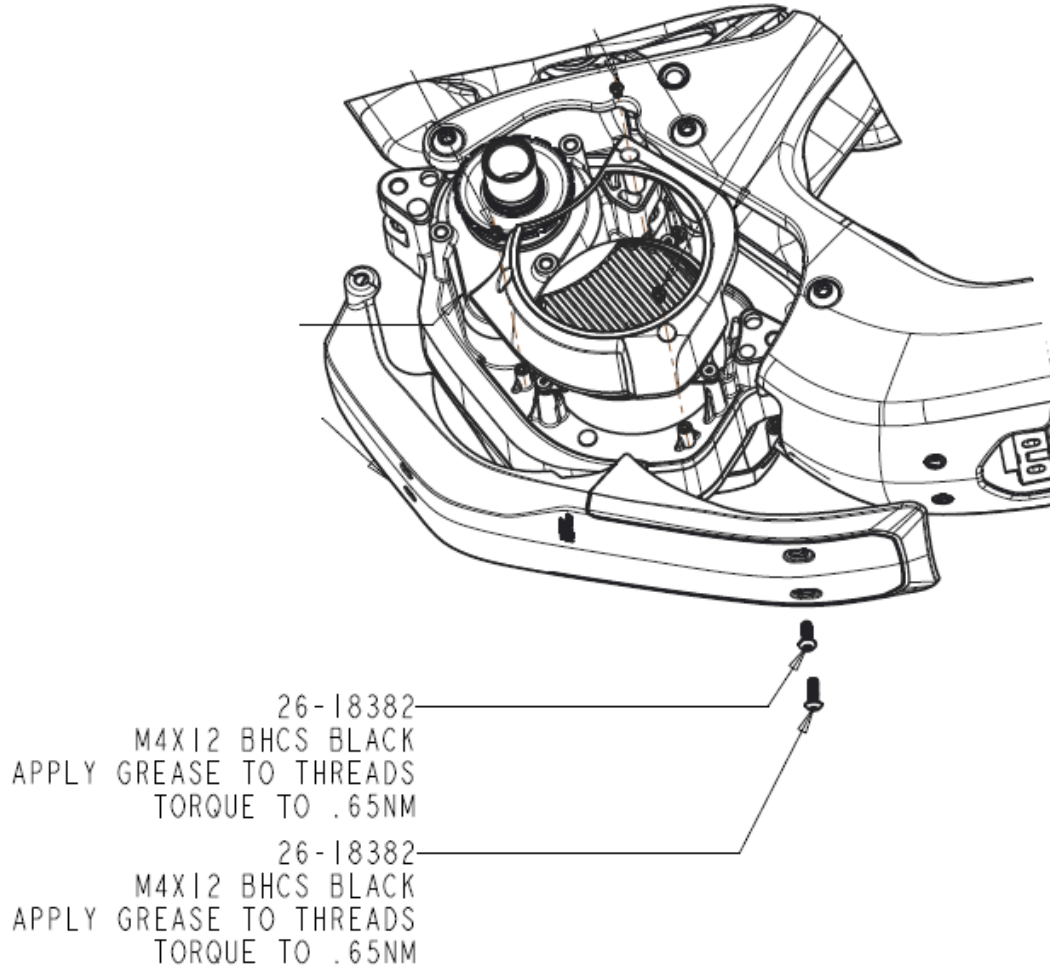
Procedures

1. Remove the battery.



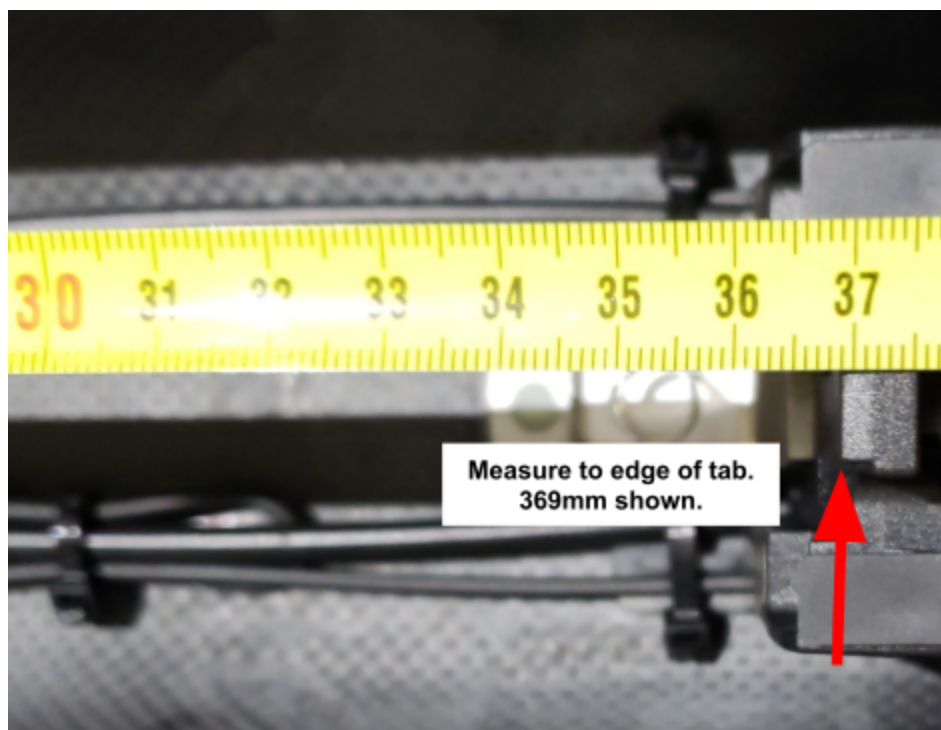
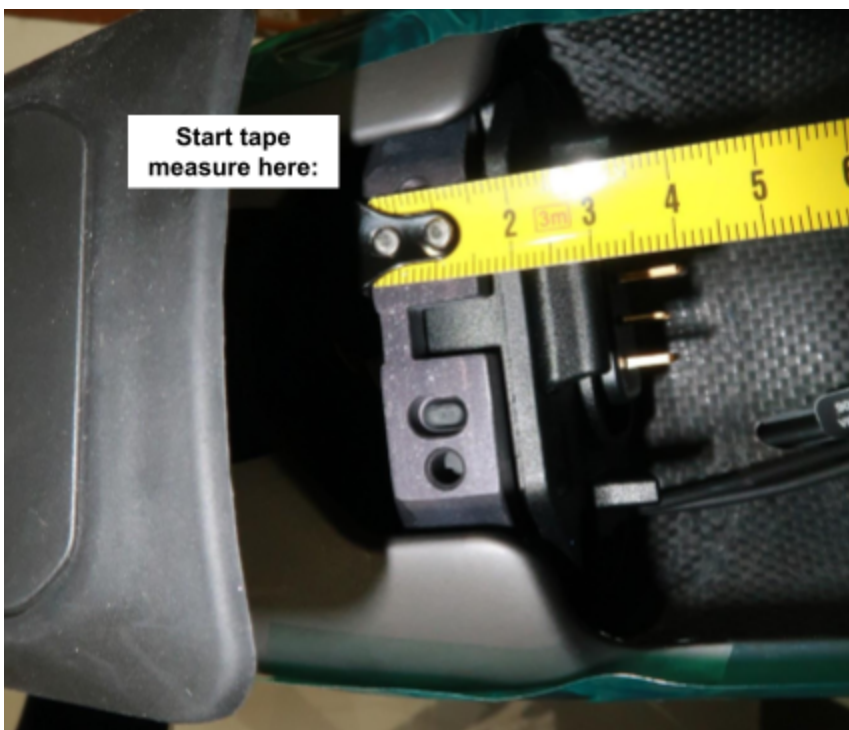
PEN-004 - Battery Mount Check and Rework - Rev. A

2. Remove the two M4x12 screws at the front of the downtube protector.



3. Check the battery mount spacing.
 - 3.1. Use a tape measure to measure the distance between the two reference points pictured.
 - 3.1.1. **Heckler:**
 - 3.1.1.1. If the measurement is 369mm or less the battery mounts are correct.
 - 3.1.1.2. If the measurement is more than 369mm continue to step 4 and rework until correct.
 - 3.1.2. **Bullit:**
 - 3.1.2.1. If the measurement is 439mm or less the battery mounts are correct.
 - 3.1.2.2. If the measurement is more than 439mm continue to step 4 and rework until correct.

PEN-004 - Battery Mount Check and Rework - Rev. A



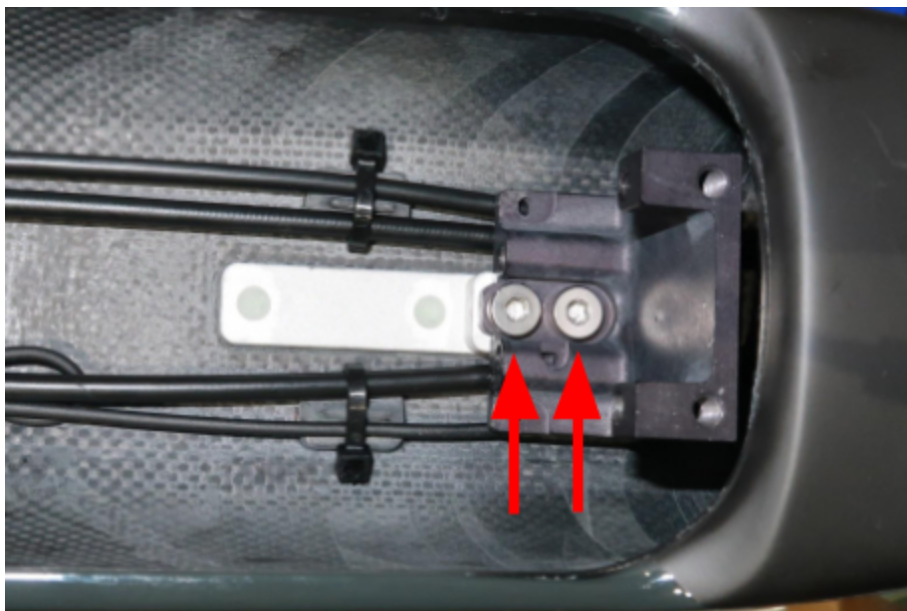
PEN-004 - Battery Mount Check and Rework - Rev. A

4. Use a 3mm hex key to remove the front battery mount.

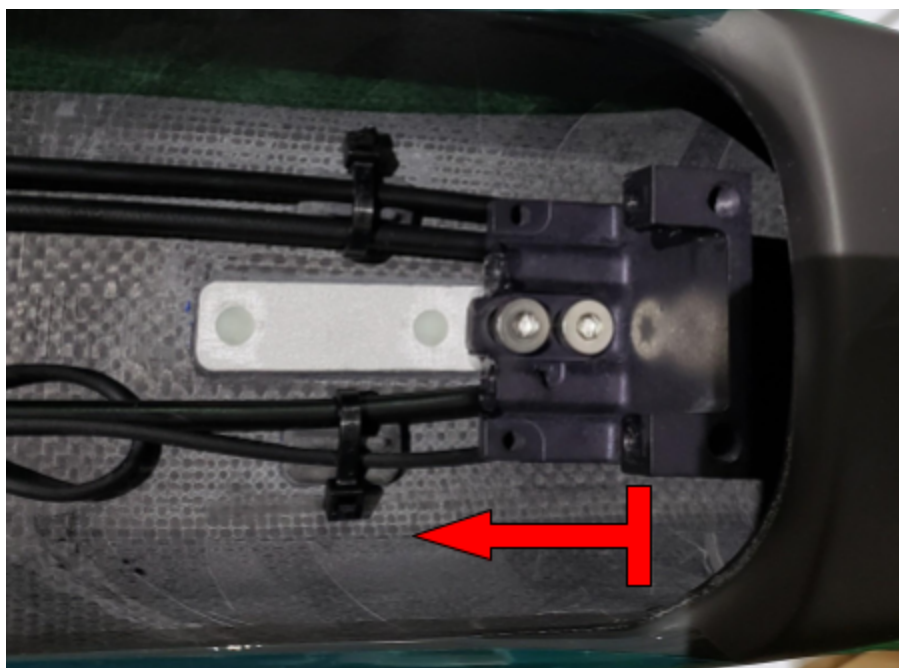


PEN-004 - Battery Mount Check and Rework - Rev. A

5. Use a 4mm hex key to loosen the two bracket bolts.



6. Slide the bracket towards the rear of the bike as far as it will go.



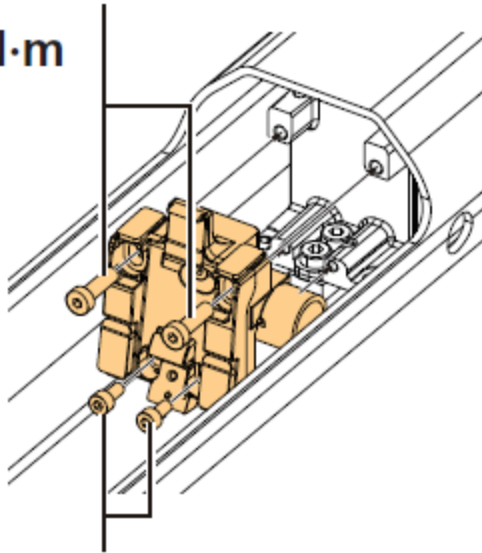
- 7.

PEN-004 - Battery Mount Check and Rework - Rev. A

7. Tighten the two bracket bolts to 6Nm.
8. Reinstall the battery mount.

Upper latch base mounting bolt B

3 2 N·m



Upper latch base mounting bolt A

3 1 N·m

9. Repeat step 3.

Notice

The battery cover may need to be re-centered within the downtube after the bracket adjustment.