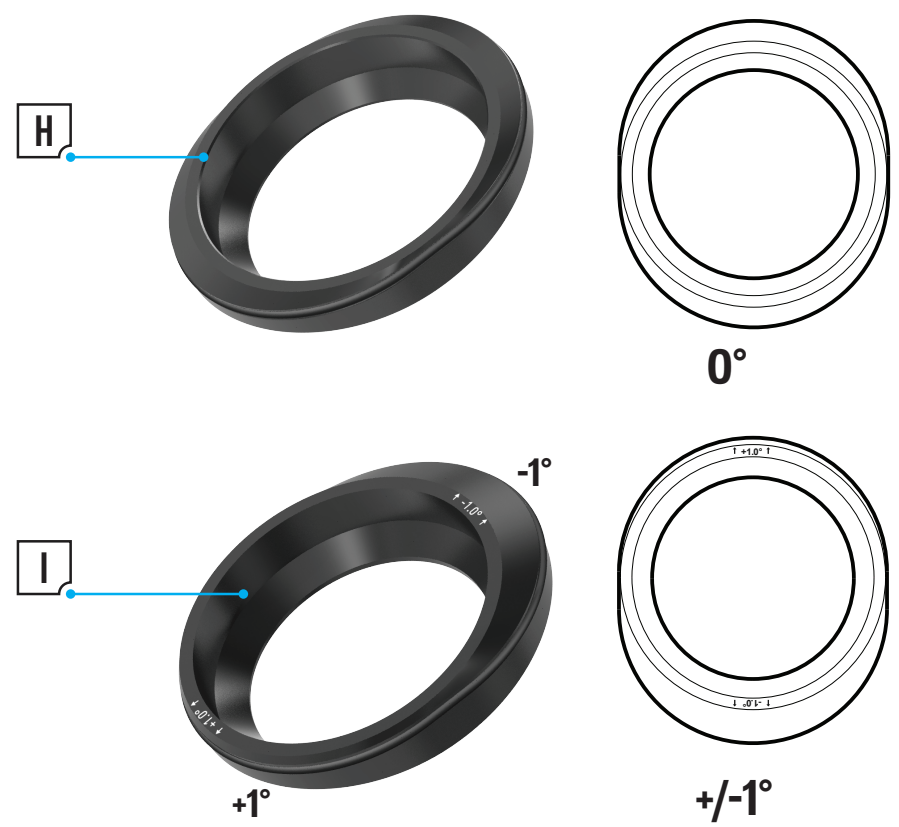
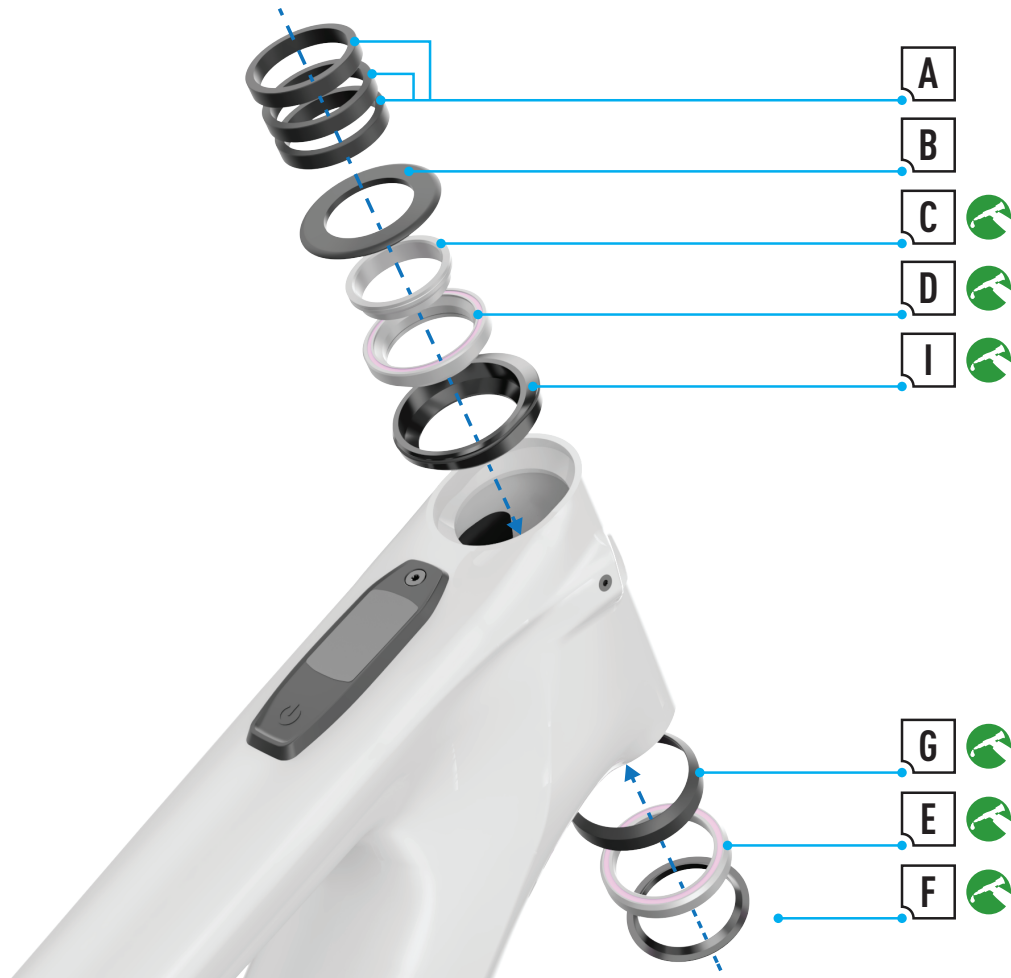


 <https://vimeo.com/587738348/39eb5cf155>

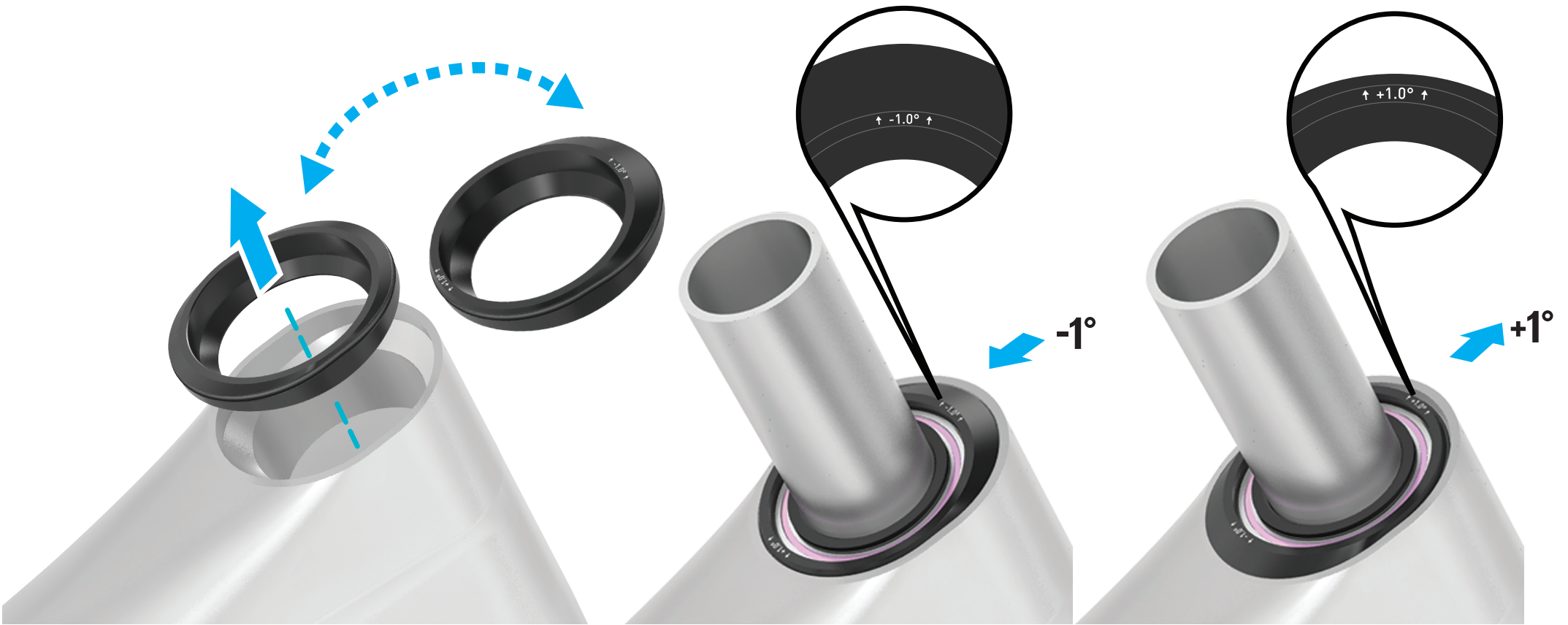
#	PART NAME	PART NUMBER	QTY	SPEC	TOOL	TORQUE		COMMENT
						Nm	in-lbf	
A	Speed Sensor kit	<a href="#">S196800019</a>	1		N/A	N/A	N/A	
B	Speed Sensor bolt	<a href="#">S216800021</a>	1	M4 x 8 mm x 0.7mm	3 mm hex	1	9	
C	Speed Sensor grommet		1		N/A	N/A	N/A	
D	Speed sensor magnet bolts	<a href="#">S194200016</a>	2	M5 x15 mm x 0.8 mm	T25 Torx	6.2	55	
E	Speed sensor magnet				N/A	N/A	N/A	



6



#	PART NAME	PART NUMBER	QTY	SPEC	TOOL	TORQUE		COMMENT
						Nm	in-lbf	
A	Headset spacers 10 mm	<a href="#">S212500012</a>	3	Headset spacer 10 mm	N/A	N/A	N/A	
B	Headset cap	<a href="#">S182500005</a>	1	45.5 mm Top cover	N/A	N/A	N/A	
C	Compression ring		1		N/A	N/A	N/A	
D	Upper bearing		1	11/8" (42 mm x 30.5 x 8 mm,) 45°	N/A	N/A	N/A	
E	Lower bearing		1	1.5" (52 mm x 40 x 7 mm,) 45°	N/A	N/A	N/A	
F	Crown race		1		N/A	N/A	N/A	
G	Lower bearing cup	<a href="#">S212500014</a>	1	Spherical Adapter 1.5" 45° - 54 mm OD x 52 mm ID	N/A	N/A	N/A	
H	Upper zero offset cup		1	Headtube Angle Adjust 0°   1-1/8" - 41.8 mm ID, 46 X 52.5	N/A	N/A	N/A	
I	Upper +/-1° offset cup		1	Headtube Angle Adjust 1°   1-1/8" - 41.8 mm ID, 46 X 52.5	N/A	N/A	N/A	

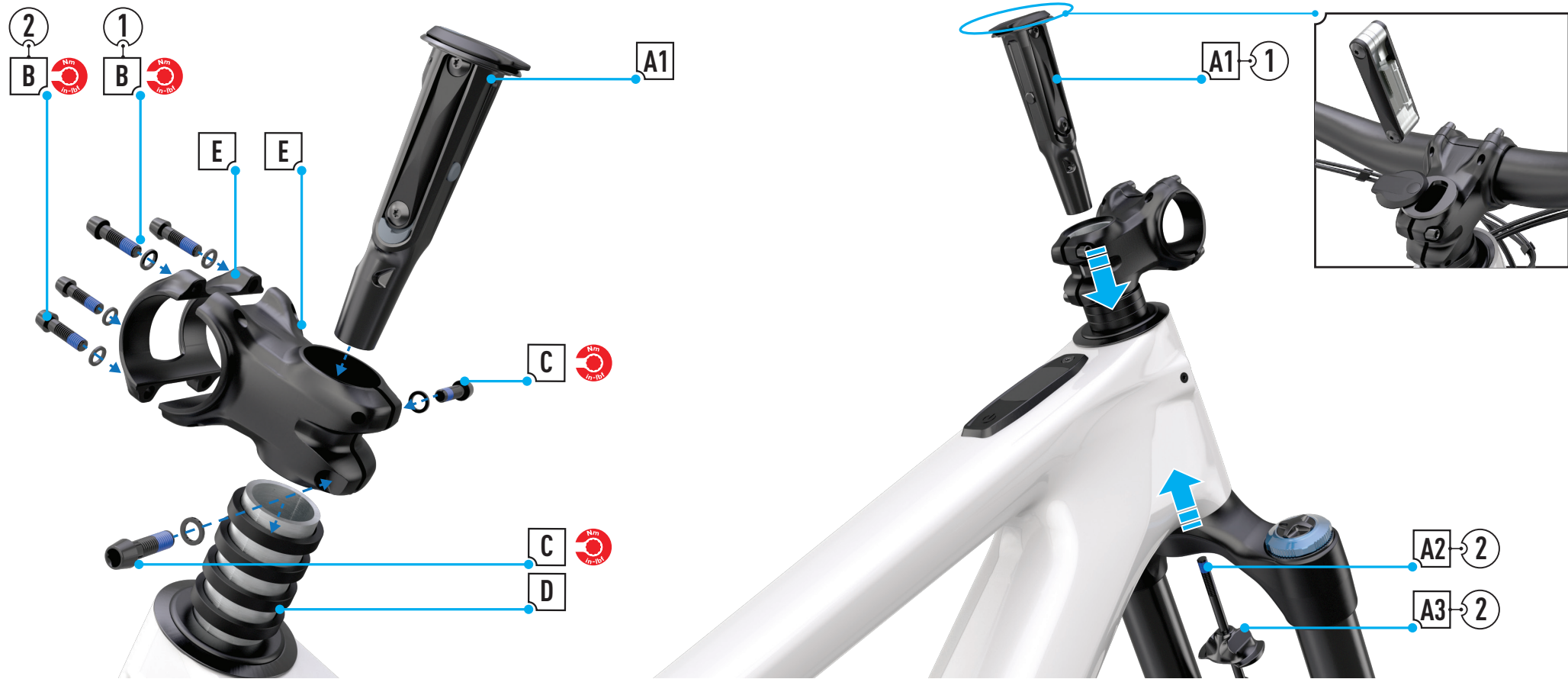


The head tube angle is adjustable via adjustable headset cups. The bike ships with the “zero” offset cup (A) and a +/- 1-degree headset cup (B) ships in the small parts box.

**ADJUSTABLE HEADSET CUP REPLACEMENT.**

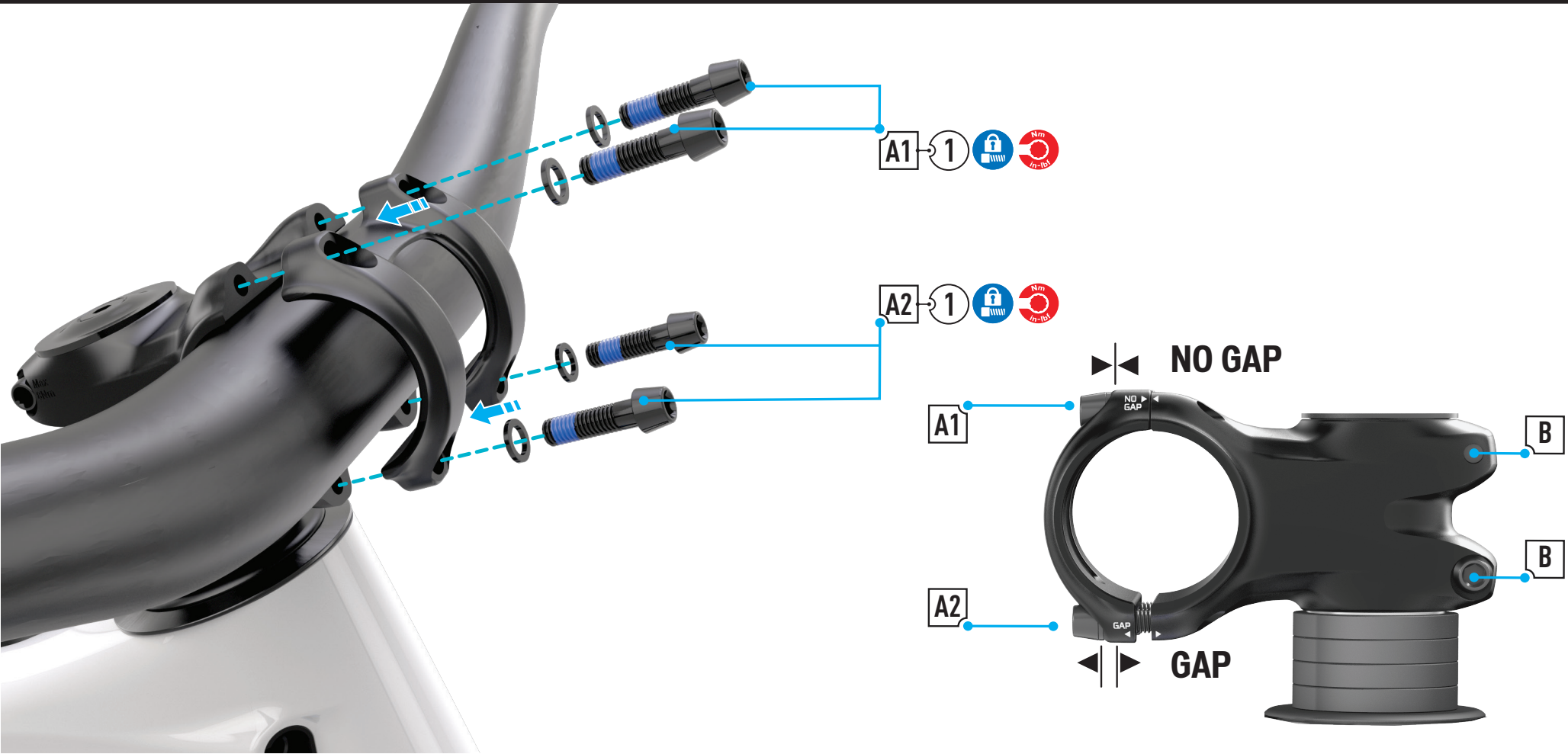
- Remove the zero offset cup from the head tube and replace it with the +/- 1-degree headset cup.
- Install the headset parts, bearings, and cups into the frame.
- When aligning the headset cup, the etching facing the front of the bicycle indicates the desired setting.

- i** Make sure the head tube and headset cup are free of dirt and debris when changing the upper cup angle. Lubricate all the parts with high-quality waterproof grease.
- i** All models are shipped with the zero offset cup installed. Switching the headset cup steepens or slackens the head tube angle by +/-1 degree.
- i** The bottom headset cup is universal for all headset cups. The cup has a spherical interface with the head tube and will move with the angle of the steerer tube.

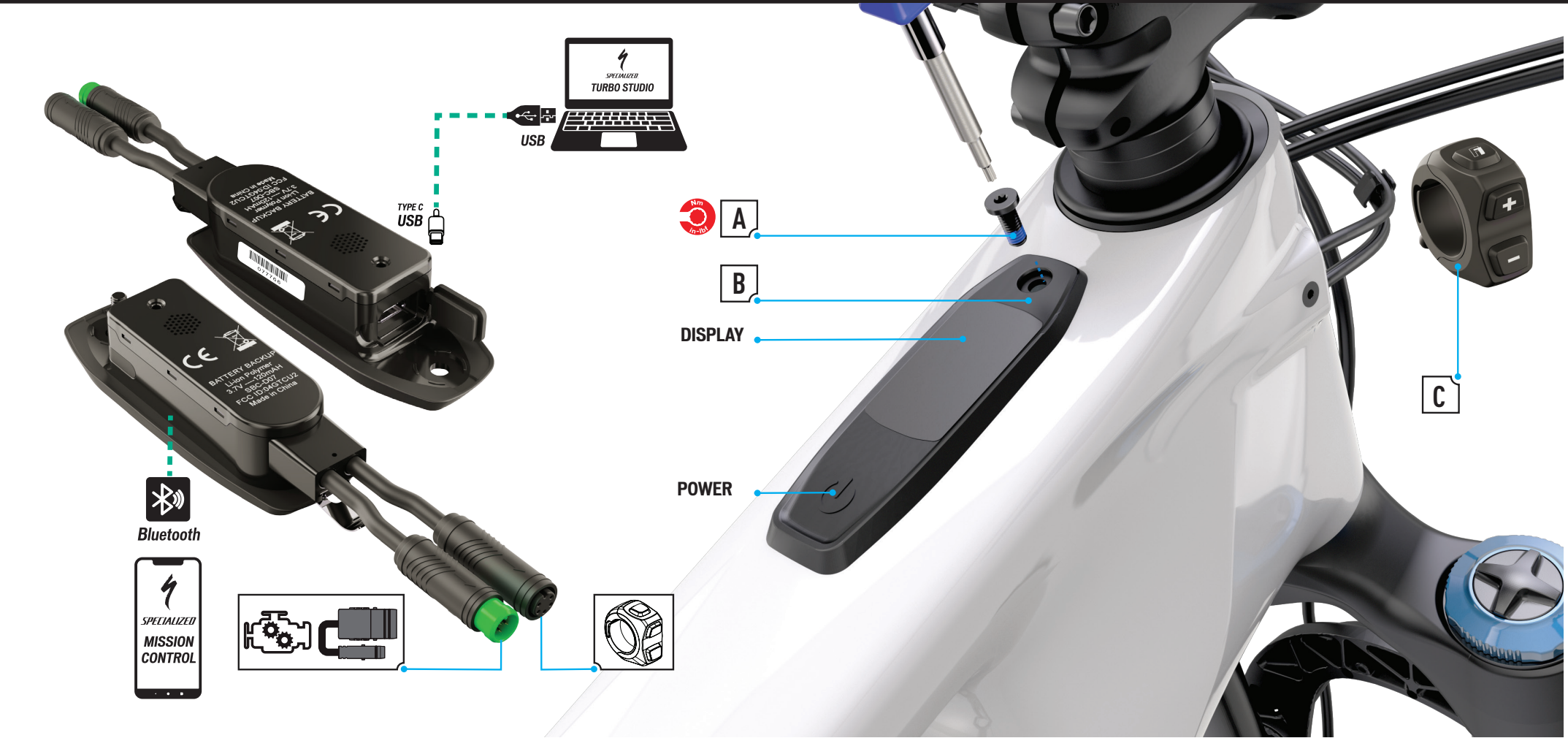


#	PART NAME	PART NUMBER	QTY	SPEC	TOOL	TORQUE		COMMENT
						Nm	in-lbf	
A1	SWAT™ conceal carry MTB tool		1	90 mm <a href="#">S185300020</a>   105 mm <a href="#">S185300016</a>   120 mm <a href="#">S185300017</a>	N/A	N/A	N/A	
A2	SWAT™ bowtie anchor		1		N/A	N/A	N/A	
A3	SWAT™ anchor bolt		1	Frame size   S2 90 mm   S3 105 mm   S4/S5 120 mm bolt	5 mm hex	N/A	N/A	
B	Alloy trail stem faceplate bolt		4	M5 x 18 mm x 0.8 mm p / includes spring washer	5 mm hex	6	53	
C	Alloy trail stem steerer bolt		2	M6 x 20 mm x 1 mm p / includes spring washer	5 mm hex	8	71	
D	Headset spacer		3	34 mm OD x 28.6 mm ID x5 mm	N/A	N/A	N/A	
E	Alloy trail stem		1	Frame size   S2 40 mm   S3/S4/S5 50 mm	N/A	N/A	N/A	
F	Stem Deity Coperhead (not shown)		1	Deity Stem, Copperhead, 35 mm / 50 mm	N/A	N/A	N/A	Frame size S2 35 mm   S3/S4/S5 50 mm
G	Stem Deity Coperhead bolts (not shown)		4	M6 x 18 mm x 1.0 mm p	5 mm hex	4 - 6	35.5 - 53	





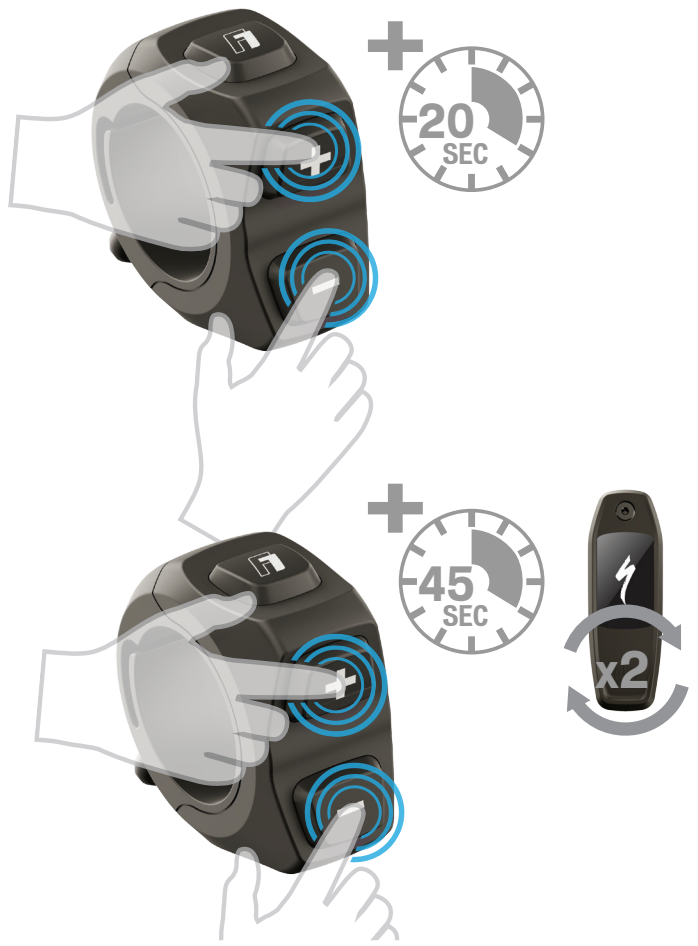
#	PART NAME	PART NUMBER	QTY	SPEC	TOOL	TORQUE		COMMENT
						Nm	in-lbf	
A1	Alloy Trail stem faceplate bolt		4	M5 x 18 mm x 0.8 mm p / includes spring washer	5 mm hex	6	53	
A2			4					
B	Alloy Trail stem steerer bolt		2	M6 x 20 mm x 1 mm p / includes spring washer	5 mm hex	8	71	



#	PART NAME	PART NUMBER	QTY	SPEC	TOOL	TORQUE		COMMENT
						Nm	in-lbf	
A	Turbo Connect Unit (TCU) Screw	<a href="#">S216800020</a>	1	M4 x 10 mm x 0.7 mm P	T10 Torx	0.8	7	Do not overtighten: MAX 0.8 Nm
B	MasterMind Turbo Connect Unit (TCU 2 )		1	Turbo Connect Unit				Update firmware via USB data cable and Turbo Studio
C	Trail Remote	<a href="#">S216800019</a>	1		2 mm hex	0.8	7	Do not overtighten: MAX 0.8 Nm ( TCU 2 remote as replacement)

**CAUTION:** The TCU sits above the top tube and has the potential to be struck by the handlebar or stem when the handlebar is rotated fully. When assembling the bicycle, make sure to have enough clearance between the handlebar, stem, and the TCU.

The number of spacers below the stem necessary to clear TCU will depend on several factors. These include stem model/length/orientation, which TCU version your bicycle is equipped with, and the head tube angle adjustment position.



MasterMind TCU equipped models have a built-in diagnostic system to automatically check and identify the functionality of the system. If the system detects an error, the MasterMind TCU will show the error on the display. In some cases, the error message can be dismissed by pushing any button on the remote.

Depending on the type of error message, the system may be switched off automatically. If you receive an error message, please restart the system. If the error message continues to display, please contact your Authorized Specialized Retailer for further instructions. In any case, the bicycle can be ridden without motor support with the system turned off.

**i** Mission Control supports the rider with User Actions for errors and diagnostic reports which can be shared with retailers who can give further advice based on the bicycle serial number.

**MASTERMIND TCU RESET PROCESS:**

**Standard Reset**

Standard reset is the first troubleshooting step if an odd bike or display behavior occurs, such as failing to connect to MC after a previously successful connection.

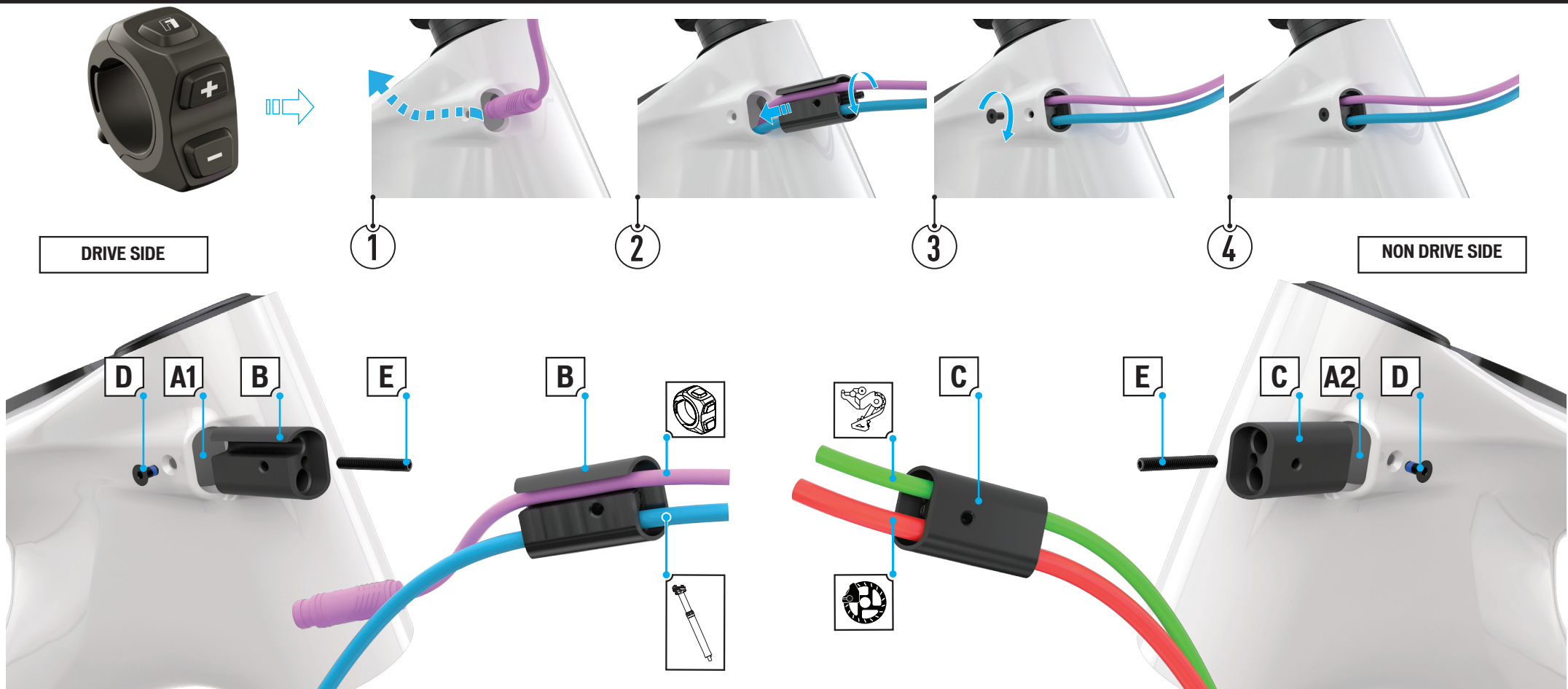
Standard reset restores the default Tune settings, including Acceleration Response and Shuttle.

- Dual press and hold the (+) and (-) buttons for 20 seconds.
- Release the buttons when the MasterMind TCU reboots.

**Factory Reset**

A factory reset should be performed before a new or used bicycle is handed over to a new rider. Factory Reset restores the system to factory Settings, also clearing and resetting previous BLE pairings.

- Dual press and hold the (+) and (-) buttons for 45 seconds. During this process, the MasterMind TCU will reboot twice.
- Release the buttons when the MasterMind TCU reboots for the second time.



#	PART NAME	PART NUMBER	QTY	SPEC	TOOL	TORQUE		COMMENT
						Nm	in-lbf	
A1/A2	Head tube ICR ports	S206500008	2		N/A	N/A	N/A	
B	ICR port - drive side		1		N/A	N/A	N/A	
C	ICR port - non-drive side		1		N/A	N/A	N/A	
D	ICR port guide screw		2	M3 x 6 mm x 0.5 mm p	2 mm hex	0.8	7	
E	ICR port grub screw		2	Grub screw M3 x 20 mm x 0.5 mm p	1.5 mm hex	N/A	N/A	

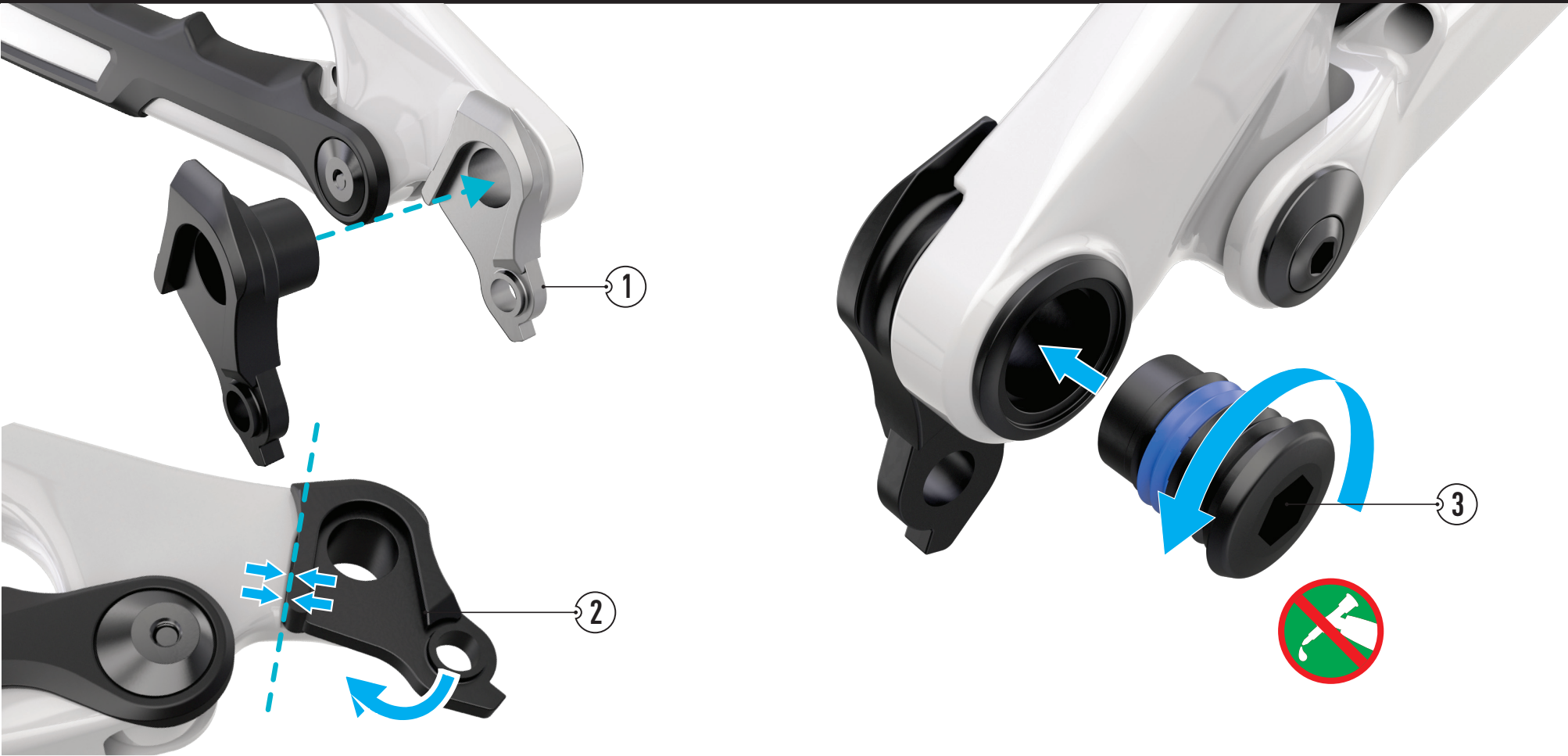
INSTALL THE DRIVE SIDE ICR GUIDE

- Insert the remote connector through head tube ICR port [A1] on the drive side, exiting the top tube cut out.
- Thread the dropper cable through the lower hole on the drive side ICR guide [B]
- Slide the remote cable into the ICR guide [B] through the top slot in ICR guide. Insert the grub screw [E] and tighten.
- Slide the ICR guide [B] back into the head tube port [A1], then using a 2 mm hex key, insert the guide screw [D] back into the guide, and torque to specification.

INSTALL THE NON-DRIVE SIDE ICR GUIDE

- Thread the derailleurs cable through the upper hole on the non-drive side ICR guide [C]
- Thread the rear brake cable through the lower hole on the non-drive side ICR guide [C]
- Insert the grub screw [E] and tighten.
- Slide the ICR guide [C] into the head tube port [A2], then using a 2 mm hex key, insert the guide screw [D] tighten to specification.





#	PART NAME	PART NUM-BER	QTY	SPEC	TOOL	TORQUE		COMMENT
						Nm	in-lbf	
1	SRAM universal derailleur hanger	<a href="#">S202600002</a>	1		8 mm hex	25	221	

**WARNING!** Correct grease application is critical to rider safety. **ONLY** apply grease as instructed.

**INSTALLATION PROCEDURE:**

- Install the UDH hanger assembly into the frame dropout.
- Rotate the UDH hanger forward until it is completely seated in the hanger pocket or contacts the rotational stop tab.

Apply grease **ONLY** to the thru-axle threads. Do **NOT** apply grease to the frame, UDH hanger, or UDH bolt threads.

The hanger must be completely seated in the hanger pocket or against the frame stop tab when tightened to the specified torque.

- Install the UDH washer, then thread the UDH bolt through the washer and into the hanger.
- Torque the bolt to specification. The UDH hanger bolt is left-hand threaded.

A reversible (left-hand and right-hand thread) torque wrench **MUST** be used to ensure proper left-hand thread bolt torque.



SIZE	MAX INSERTION	MIN INSERTION
S2	150 mm	80 mm
S3	150 mm	
S4	170 mm	
S5	200 mm	

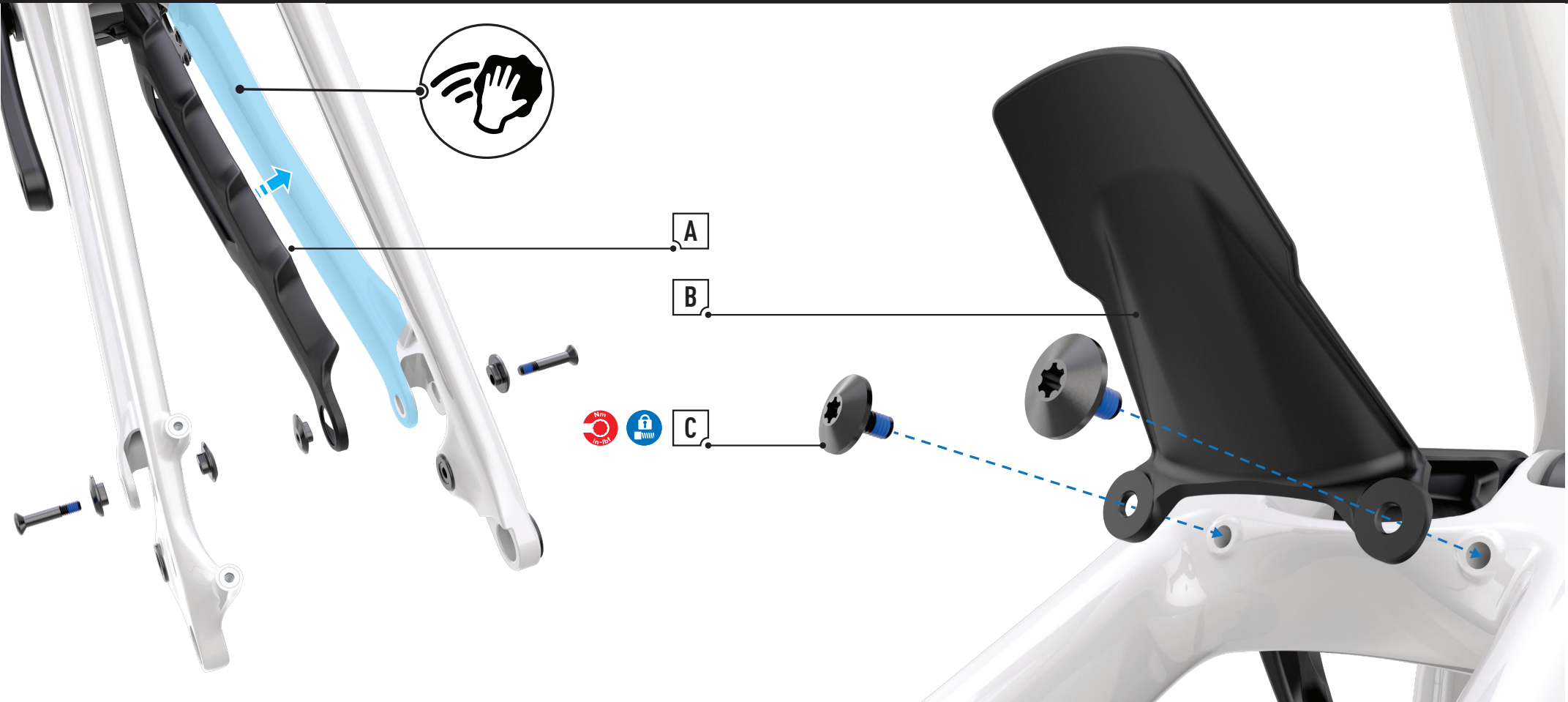


#	PART NAME	PART NUMBER	QTY	SPEC	TOOL	TORQUE		COMMENT
						Nm	in-lbf	
A	Seatpost collar	<a href="#">S214700007</a>	1	38.6 mm Seatpost collar	4 mm	6.2	55	Align with the bolt facing forward

**SEATPOST MINIMUM INSERTION:**  
Both the frame and seatpost have minimum insertion requirements. In addition, the frame has a maximum insertion requirement to prevent damage to the frame and seatpost.

**MINIMUM INSERTION:**  
■ The seatpost must be inserted into the frame deep enough so the minimum insertion/maximum extension (min/max) mark on the seatpost is not visible. The frame requires a minimum of 100 mm of insertion.

**MAXIMUM INSERTION:**  
■ The seat tube is reamed to a specified maximum insertion depth for each frame size. This ream depth limits the insertion depth of the seatpost.  
■ If the desired seat height cannot be achieved within the minimum and maximum insertion requirements, the seatpost should be replaced for a shorter or longer one.



#	PART NAME	PART NUM-BER	QTY	SPEC	TOOL	TORQUE		COMMENT
						Nm	in-lbf	
A	Kenevo SL rear fender	S212200004	1		N/A	N/A	N/A	
B	Kenevo SL rear fender screw		2	M4 x 8 mm x 0.7 mm p	T25 Torx	N/A	N/A	
C	Chainstay protector	S216900002	1		N/A	N/A	N/A	



PART NAME	NUMBER	PART SPECIFICATION	PART DESCRIPTION	QTY
Chainstay carbon (gloss carbon)	S211500003	Chainstay	CS,AS FINISHED,PA TRAIL FSR E1.1,29,CRBN,LT,CRBN	1
Bearing		17 mm ID x 28 mm OD x 6 mm W,DBL SLD	BRG,BALL,17MM ID X 28MM OD X 6MM W,DBL SLD	2
Bearing		12 mm ID x 24 mm OD x 6 mm W,DBL SLD	BRG,BALL,12MM ID X 24MM OD X 6MM W,DBL SLD	2
Seatstay carbon (gloss carbon)	S215000001	Seatstay	SS,AS FINISHED,PA TRAIL FSR E1.1,CRBN	
Bearing		12 mm ID x 21 mm OD x 5 mm W DBL SLD	BRG,BALL,12mm ID X 21mm OD X 5mm W,DBL SLD	4
Bearing spacer		6 mm ID x 16 mm OD x 16 mm W	SPCR,STEP,6MM ID X 16MM OD X 16MM W,7075-T6	2
Bearing suspension kit	S210600001		BRG MY22 LEVO SUSPENSION BEARING KIT	
Bearing		17 mm ID x 28 mm OD x 6 mm W,DBL SLD	BRG,BALL,17MM ID X 28MM OD X 6MM W,DBL SLD	8
Bearing		12 mm ID x 24 mm OD x 6 mm W,DBL SLD	BRG,BALL,12MM ID X 24MM OD X 6MM W,DBL SLD	6
Bearing		12 mm ID x 21 mm OD x 5 mm W,DBL SLD	BRG,BALL,12MM ID X 21MM OD X 5MM W,DBL SLD	4
Kenevo SL lower link kit	S214300002		SHL MY22 KENEVO SL LOWER LINK, ALY	
Lower link		Lower link alloy	LINK C,PA TRAIL FSR E1.1,29,CRBN,LT	1
Bearing		17 mm ID x 28 mm OD x 6 mm W,DBL SLD	BRG,BALL,17MM ID X 28MM OD X 6MM W,DBL SLD	4
Bearing spacer		17 mm ID x 40.5 mm OD x 2 mm W	SPCR,17 ID X 40.5 OD X 2 W,ALY,BLK	1
Kenevo SL upper link kit	S214300005		SHL MY22 KENEVO SL UPPER LINK, ALY	
Upper link		Upper link alloy	LINK A,PA TRAIL FSR E1.1,29,CRBN,LT	1
Bearing		12 mm ID x 24 mm OD x 6 mm W,DBL SLD	BRG,BALL,12MM ID X 24MM OD X 6MM W,DBL SLD	4
Kenevo SL mid link kit	S214300003		SHL MY22 KENEVO SL MID LINK, ALY	
Mid link		Mid link carbon	LINK B,PA TRAIL FSR E1.1,29,CRBN,LT,ALY	1
Bearing		17 mm ID x 28 mm OD x 6 mm W,DBL SLD	BRG,BALL,17MM ID X 28MM OD X 6MM W,DBL SLD	2
Bearing	S210500009	12 mm ID x 24 mm OD x 6 mm W,DBL SLD	BRG,BALL,12MM ID X 24MM OD X 6MM W,DBL SLD	2
Kenevo SL suspension bolt kit			BLT MY22 KENEVO SL SUSPENSION BOLT KIT	
Upper link @ seatstay inner spacer		10/12 mm ID x 17.5 mm OD x 2.5 mm W	BSHG,FLG,10/12MM ID X 17.5MM OD X 2.5MM W,BLK	8
Upper link @ seat tubespacer		12 mm ID x 18.6 mm OD x 2.7 mm W	BSHG,FLG,12MM ID X 18.6MM OD X 2.7MM W	2
Lower link @ mid link inner spacer		15/17 mm ID x 23 mm OD x 2.5 mm W	BSHG,FLG,15/17MM ID X 23MM OD X 2.5 W	7
Mid link @ lower link inner spacer		15 mm ID x 9.65 mm OD x 6.5 mm W	BSHG,FLG,15MM ID X 9.65MM OD X 6.5MM W,ALY	2
Horst flip chip outer			DO PIVOT SPACER,GEO ADJ,6.0 ID, FLAT	2
Horst flip chip inner			DO PIVOT SPACER,GEO ADJ,M6 X 1	2
Horst pivot outer spacer		12 mm ID x 21 mm OD x 2.5 mm W	HORST PIVOT OUTER SPACER ASSY 12X21X2.5	4
Mid link @ lower link nut		M15 custom nut	NUT CSTM,15MM ID,STL	1
Lower link @ shock tunnel wedge		M8 x 1 mm p expander bolt Titanium	SCR,CUST,EXPANDER WEDGE,M8,TI	1
Lower link @ shock tunnel axle		M15 x 67 mm x 1 mm p expanding bolt	SCR,CUST,EXPANDING,M15X1.0 X 67,7075,BLK	1
Upper link @ mid link/seatstay bolt		M10 x 32 mm x 1 mm p bolt	SCR,CUST,M10X1.0 X 32,7075,BLK	2
Upper link @ seat tube bolt		M12 x 20 mm x 1 mm p bolt	SCR,CUST,M12X1.0 X 20,7075,BLK	2
Mid link @ lower link axle bolt		M15 x 71 mm x 0.8 mm p bolt	SCR,CUST,M15X0.8 X 71,7075,BLK	1
Main pivot bolt NDS		M15 x 19 mm x 1 mm p bolt	SCR,CUST,M15X1.0 X 19,7075,BLK	1
Main pivot bolt DS		M15 x 19 mm x 1 mm p bolt + cover	SCR,CUST,M15X1.0 X 19,CHAIN GUIDE,7075,BLK	1
Horst pivot bolt		M6 x 32.5 mm x 1 mm p bolt	SCR,CUST,M6X1.0 X 32.5,STL,BLK	2
Mud flap screw		T25-M4 x 7 mm x 0.8 mm p bolt	SCR,CUST,T25,M4X0.7X8,2024,BLK	2
Lower link @ shock tunnel spacer		17 mm ID x 40.5 mm OD x 2 mm W	SPCR,17 ID X 40.5 OD X 2 W,ALY,BLK	1
Horst pivot inner spacer		6 mm ID x 16 mm OD x 16 mm W	SPCR,STEP,6MM ID X 16MM OD X 16MM W,7075-T6	2
Speed sensor bolt		M4 x 14 mm x 0.7 mm p bolt	SCR,SKT FLT HD,M4X0.7 X 14,7075-T73,BLK	1

ICR port mounting screw		M3 x 6 mm x 0.5 mm p bolt	SCR,SKT FLT HD,M3X0.5X6,STL BLK ZINC	2
Forward shock mounting bolt	S210500007	M8 x 45 mm x 1 mm p bolt	SCR,CUST,M8X1.0 X 45,STL	1
Forward shock mounting bolt		8.3 mm ID x 13 mm OD x 0.5 mm W	WSHR,FLAT,M8,8.3IDX13ODX0.5THK,304SST	1
Horst pivot geo adjust kit	S210500006			
Horst pivot bolt		M6 x 32.5 mm x 1 mm p bolt	SCR,CUST,M6X1.0 X 32.5,STL,BLK	2
Horst pivot outer spacer		12 mm ID x 21 mm OD x 2.5 mm W	HORST PIVOT OUTER SPACER 12X21X2.5	4
Horst flip chip outer			DO PIVOT SPACER,GEO ADJ,6.0 ID, FLAT	2
Horst flip chip inner			DO PIVOT SPACER,GEO ADJ,M6 X 1	2
SRAM Universal Derailleur Hanger	S202600002		HGR SRAM AC UDH DERAILLEUR HANGER AL BLACK	1